

# PROJECT YEAR 2 EVALUATION REPORT

JULY 2022 - JUNE 2023

## PREPARED BY

Bartkowski & Associates Research Team  
in collaboration with  
the Mississippi Public Health Institute

## SUBMITTED

July 19, 2023

*a year's overview*

# WHERE WE ARE NOW

The Mississippi Public Health Institute's Congregational Recovery Outreach Program (MSPHI-CROP), in partnership with the Mississippi Department of Mental Health, aims to reduce racialized behavioral health disparities by partnering with three Hinds County congregations, **Jackson Revival Center (JRC)**, **Pearl Street AME Church (PSAME)**, and **New Horizon Church International (NHCI)**, and local mental health providers. Substance use disorder treatment has remained the top priority of CROP. **CROP has been promoted** through its **website** (<https://msphicrop.org/>), congregational **food distributions** (over 200 households monthly), and **partnerships** with local barbers, Jackson Public Schools, and Jackson State University. CROP has expanded information-sharing about the program, substance use disorders, and mental health for adults and children through these promotional avenues. **The first year** of the grant (April - June 2022) **generated a total of 20 submitted CROP referrals**. In the **second project year**, a total of **59 CROP referrals were submitted** to local providers from all three partnered congregations (July 2022-June 2023).



A **195% increase in referrals from year 1 to year 2** was evident across the three partner congregations combined. **PSAME and JRC each submitted 24 and 23 referrals, respectively**, in year 2, whereas in year 1 JRC led with 17 referrals and PSAME had 0. **NHCI submitted 12 referrals** in year 2, a solid **300% increase from year 1** (3 referrals).



**A total of 79 referrals have been submitted** to local behavioral health providers for the cumulative two years that CROP has served Hinds County.

In CROP's first implementation year, the CROP team partnered with one behavioral health provider (Hinds Behavioral Health Services). In the second project year, the MS CROP team **partnered with an additional seven public and private behavioral health providers** located throughout Hinds County.

## CROP 2023 Providers

1. **Combined Human Support Services**
2. **Churches, Families and Communities Together (C-FACT)**
3. **The Friendship Connection**
4. **Global Treatment Center**
5. **Gordon Medical Arts Clinic**
6. **Hinds Behavioral Health Services**
7. **Phoenix Restoration Center**
8. **Restoration Recovery**



## Congregational Trainings

# NUMBERS & STATISTICS



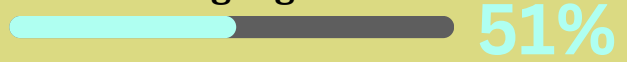
All three CROP congregations have participated in various community-centered healthy activities (e.g., health fairs, run or walk marathons). Quite impressively, PSAME has consistently hosted and attended monthly CROP trainings that address health disparity topics for their congregants and the community at large. A total of 272 training surveys have been completed over the life of the grant (PY1 = 223; PY2 = 49).

## CROP Congregational Affiliation



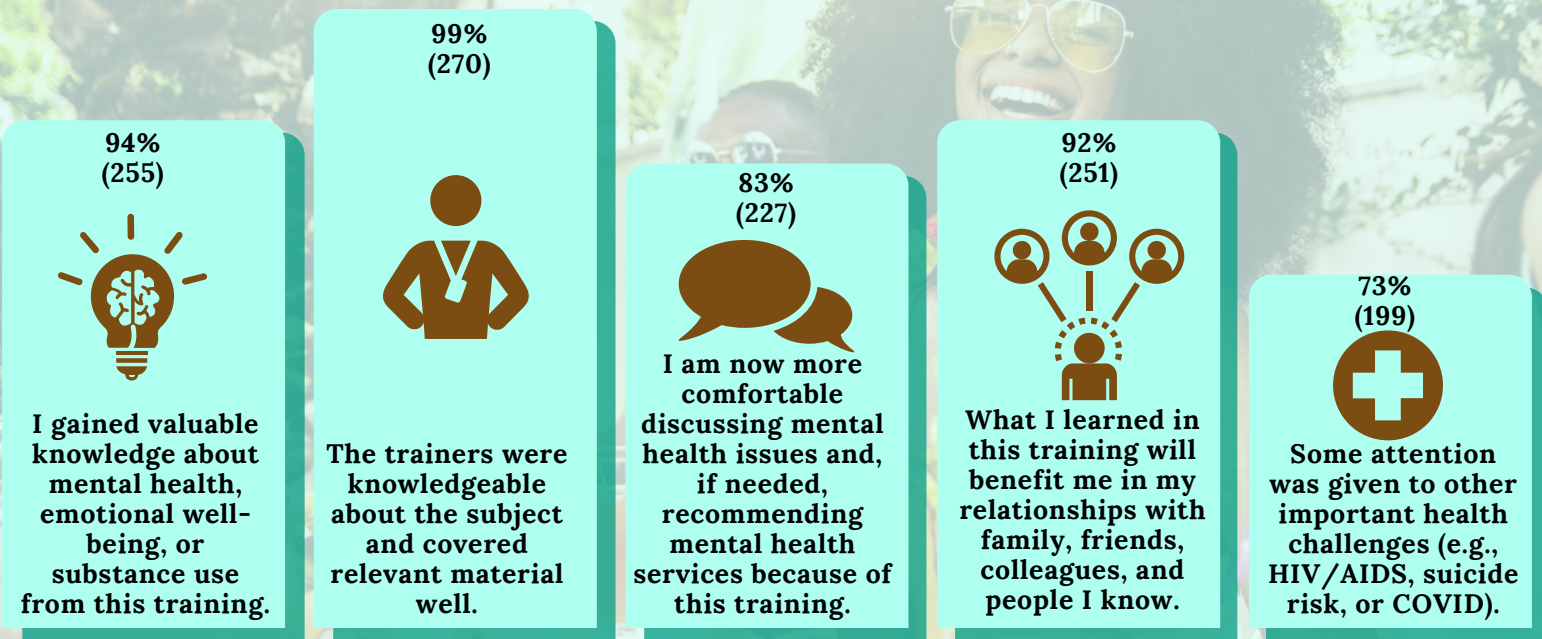
248 surveyed trainees identified a CROP church or organization affiliation; 100 attend NHCI; 33% (89) attend JRC; 19% (53) attend PSAME; 2% (6) represent a CROP faith-based organization; and 8% (23) had no CROP affiliation.

## Congregational Role



140 surveyed trainees were senior leadership (32) or ministry/program leadership (108); 96 identified as a member of a CROP church; 1% (5) were members of a faith-based organization; 7% (21) were not CROP-affiliated; and 3% (7) identified as liaisons, social workers, or guests.

Nearly or more than three quarters (73-99%) of surveyed trainees **Strongly Agree** with each of the following statements about the training(s) they completed.



*Note:* CROP trainings are held in person and via Zoom. The CROP survey sample was unduly small in year 2.

### Completed Trainings as Offered by CROP

1. CROP Professional Development Workshop-HIV with Dr. Jelani Kerr
2. Drugs of Abuse: Current Trends
3. Getting Individuals into Treatment: The Referral Process
4. Introduction to HIV AIDS
5. Mental Health 101
6. Mental Health First Aid
7. Motivational Interviewing
8. Narcan
9. Opioid Addiction
10. Person First Language
11. Shatter the Silence Suicide Prevention
12. Stalking Awareness
13. The Disease Model of Addiction
14. Trauma Informed Care
15. Triumph Over Trauma

### Training Feedback: Successes and Areas for Growth

"Everything was thoroughly covered."

"The event was virtual which allowed others to join."

"More youth involvement [in the future]."

"More classes [offered in amount and type]."

### Trainee Demographics

